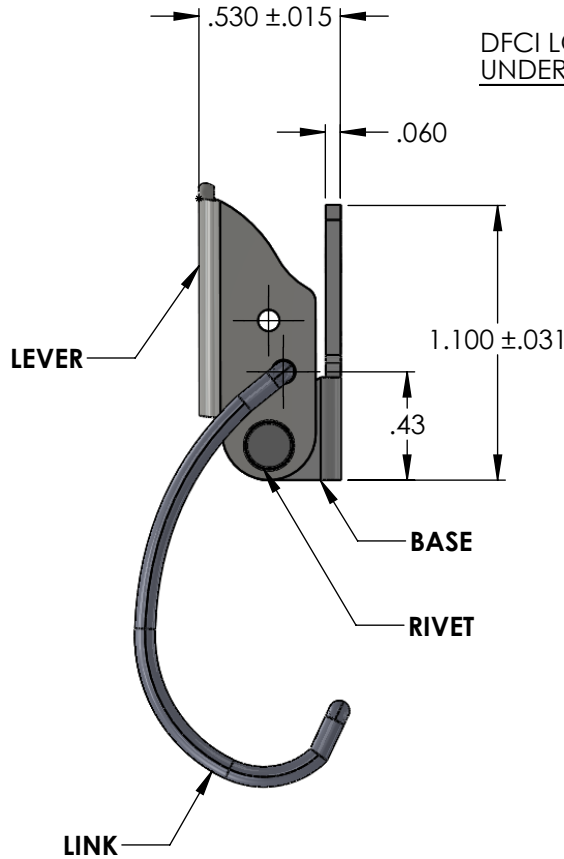
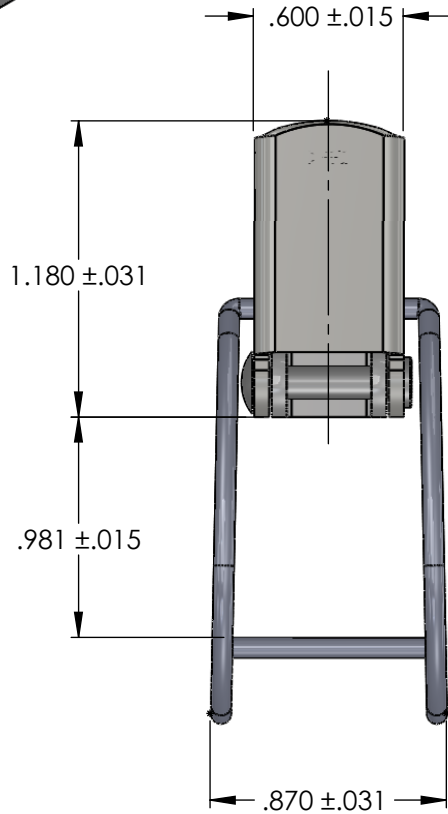
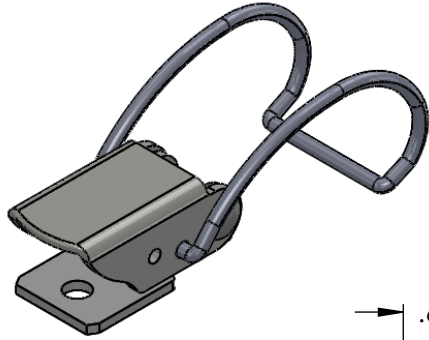
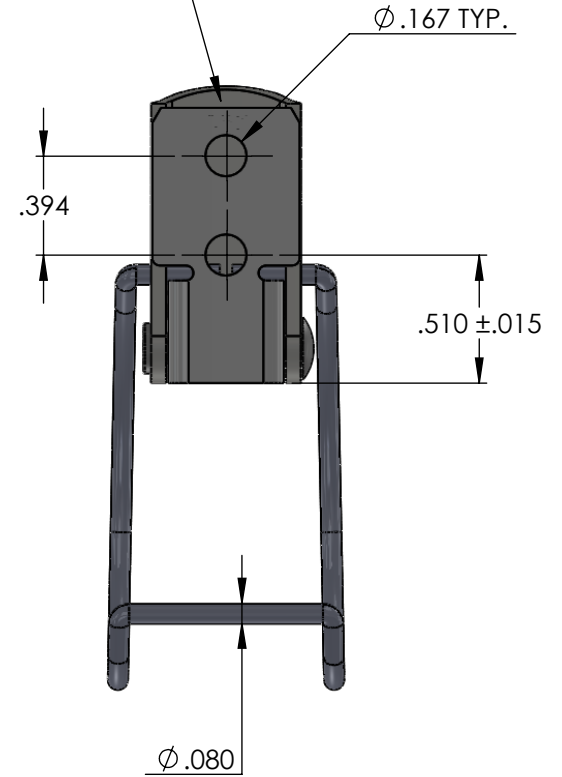


REVISIONS			
SYS	DESCRIPTION	DATE	APPROV
A	PER ECN 845 & 1168	02/20/14	



DFCI LOGO STAMPED ON UNDERSIDE OF LEVER



UNCONTROLLED

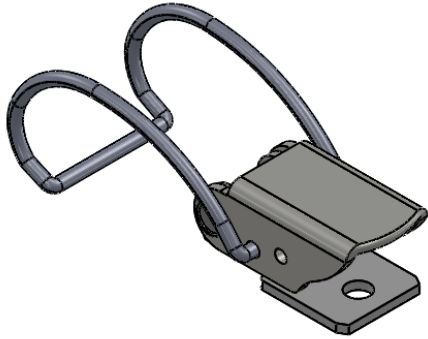
MATERIAL:	SEE TABLE
HEAT TREAT:	NONE
FINISH:	SEE NOTE 1
<small>THE FASTENER PARTS SHOWN IN THIS PRINT ARE PROPRIETARY ARTICLES TO WHICH DFCI SOLUTIONS INC., RETAINS THE EXCLUSIVE RIGHTS OF MANUFACTURE, USE AND SALE. THE PRINT OR DRAWING IS SUBMITTED IN CONFIDENCE AND DOES NOT CONVEY A LICENSE OR PERMISSION TO MANUFACTURE THE FASTENER OR FASTENER PARTS.</small>	
<small>(C) COPYRIGHT 2009, DFCI SOLUTIONS INC. ALL RIGHTS RESERVED.</small>	

TOLERANCES ON DIMENSIONS UNLESS OTHERWISE SPECIFIED			
X° = ±2°	.XX = ±.015	MACHINE FINISH = .125	
X/X = ±1/32	.XXX = ±.010		
PART NO.	SEE TABLE	DRN	DATE
		Frank Basile	02/20/14
		CHK.	DATE
		Frank Basile	02/20/14
		ENG.	DATE
		Robert Altkorn	02/20/14
		MFG.	DATE
		Rashid Ibrahim	02/20/14
		G.C.	DATE
		Robert Altkorn	02/20/14
NEXT ASSY	USED ON	SALES.	DATE



DFCI SOLUTIONS INC.
 425 UNION BOULEVARD.
 WEST ISLIP, NEW YORK 11795

TITLE			
TL-7800 TOGGLE LATCH ASSEMBLY 7886-42-Z3CT			
SIZE	FSCM NO	DWG. NO.	REV.
A	72794	C7886-42	A
SCALE: NTS		WEIGHT:	SHEET 1 OF 2




UNCONTROLLED

REVISIONS			
SYS	DESCRIPTION	DATE	APPROV
A	PER ECN 845 & 1168	02/20/14	

NOTES:

1. FINISH: BASE AND LEVER- ZINC PLATE PER ASTM-B-633, TYPE III, SC 2, CLEAR TRIVALENT CHROMATE WITH SEALER.
2. FOR THE APPLICATION OF ALTERNATIVE FINISHES, REMOVE THE SUFFIX -Z3CT FROM THE PART NUMBER AND ADD THE REQUIRED FINISH SUFFIX TO THE PART NUMBER. EXAMPLE: FOR YELLOW ZINC TRIVALENT CHROMATE FINISH, THE PART NUMBER WOULD BE 7886-42-Z3YT
3. PLEASE VISIT WWW.DFCI.COM/C7886-42 FOR A LIST OF AVAILABLE FINISHES.

PART NUMBER	MATERIAL		
	BASE & LEVER	LINK	RIVET
7886-42-Z3CT	A.I.S.I. 1008/1010 STEEL	TYPE 17-7 STAINLESS STEEL	300 SERIES STAINLESS STEEL
7886-42-SS	300 SERIES STAINLESS STEEL		

MATERIAL: SEE TABLE	TOLERANCES ON DIMENSIONS UNLESS OTHERWISE SPECIFIED X° = ±2° .XX = ±.015 X/X = ±1/32 .XXX = ±.010 MACHINE FINISH = .125				 DFCI SOLUTIONS INC. 425 UNION BOULEVARD. WEST ISLIP, NEW YORK 11795
HEAT TREAT: NONE	PART NO. SEE TABLE	DRN <i>Frank Basile</i> DATE 02/20/14	CHK. <i>Frank Basile</i> DATE 02/20/14	ENG. <i>Robert Alldredge</i> DATE 02/20/14	
FINISH: SEE NOTE 1		MFG. <i>Rashid Lubman</i> DATE 02/20/14	G.C. <i>Robert Alldredge</i> DATE 02/20/14	SALES. DATE	TITLE TL-7800 TOGGLE LATCH ASSEMBLY 7886-42-Z3CT
THE FASTENER PARTS SHOWN IN THIS PRINT ARE PROPRIETARY ARTICLES TO WHICH DFCI SOLUTIONS INC., RETAINS THE EXCLUSIVE RIGHTS OF MANUFACTURE, USE AND SALE. THE PRINT OR DRAWING IS SUBMITTED IN CONFIDENCE AND DOES NOT CONVEY A LICENSE OR PERMISSION TO MANUFACTURE THE FASTENER OR FASTENER PARTS. (C) COPYRIGHT 2009, DFCI SOLUTIONS INC. ALL RIGHTS RESERVED.	NEXT ASSY	USED ON	SCALE: NTS	SIZE A FSCM NO. 72794 DWG. NO. C7886-42	REV. A WEIGHT: SHEET 2 OF 2