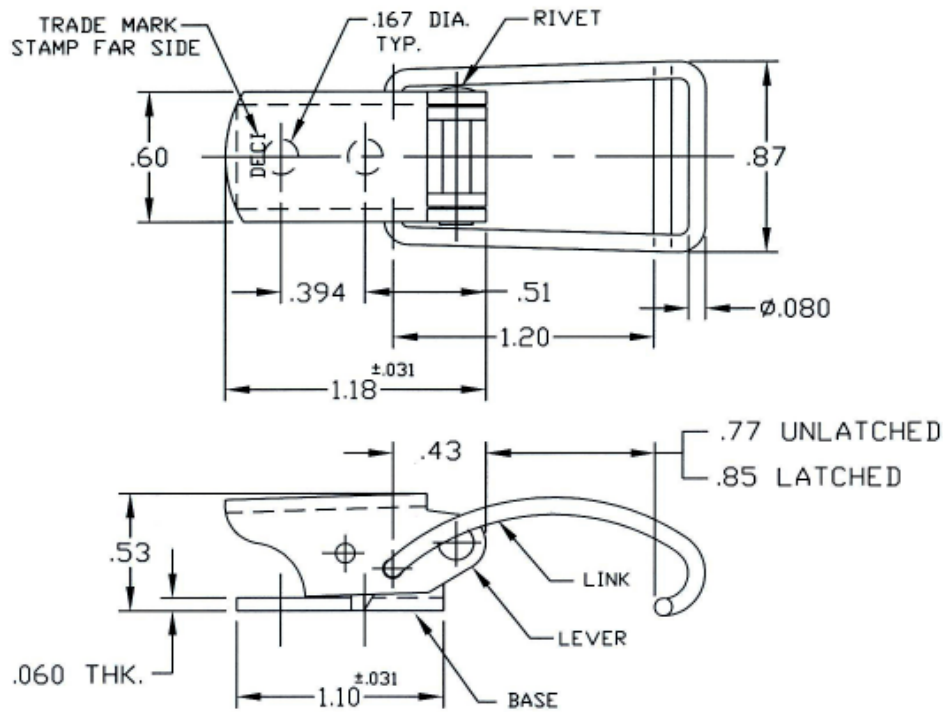


UNCONTROLLED

C7886-41 SHT. 1of2 REV. *A*

REVISIONS			
SYM	DESCRIPTION	DATE	APPROV
A	INITIAL RELEASE PER ECN 845	8-19-09	<i>FB</i>



FOR PART NO. REFER TO SHEET 2 of 2.

MAT'L PER NOTE 2.	TOLERANCES ON DIMENSIONS UNLESS OTHERWISE SPECIFIED X = ±2" .XX = ±.015 X/X = ±1/32 .XXX = ±.010 MACHINE FINISH .125		DFCI SOLUTIONS INC. 425 UNION BOULEVARD WEST ISLIP, NEW YORK 11795	
HEAT TREAT NONE.	PART NO.	DRN <i>S. Frawley</i> DATE 8-19-09	TITLE 7800 TOGGLE LATCH ASSY. 7886-41-Z3CT.	
FINISH PER NOTE 1.		CHK <i>F. Basile</i> DATE 8-19-09	SIZE A	FSCM NO 72794
<small>THE FASTENER PARTS SHOWN IN THIS PRINT ARE PROPRIETARY ARTICLES TO WHICH DFCI SOLUTIONS INC. RETAINS THE EXCLUSIVE RIGHTS OF MANUFACTURE, USE AND SALE. THE PRINT OR DRAWING IS SUBMITTED IN CONFIDENCE AND DOES NOT CONVEY A LICENSE OR PERMISSION TO MANUFACTURE THE FASTENER OR FASTENER PARTS.</small> <small>© COPYRIGHT 2009, DFCI SOLUTIONS INC. ALL RIGHTS RESERVED.</small>		ENG <i>B. Hildebrand</i> DATE 8-19-09	DWG. NO. C7886-41	REV. A
		MFG <i>B. Hildebrand</i> DATE 8-19-09	SHEET 1 OF 2	
	NEXT ASSY	USED ON	SCALE NTS	WT.
	APPLICATION BLOCK		SALES DATE	

DATE: 07/01/06 FORM: DRAWING

The parts shown in this print are proprietary articles to which DFCI Solutions, Inc. retains the exclusive rights of manufacture, use and sale. The print or drawing is submitted in confidence and does not convey a license or permission to manufacture the parts. Copyright © 2009 by DFCI Solutions, Inc. All rights reserved.


UNCONTROLLED

REVISIONS			
SYM	DESCRIPTION	DATE	APPROV
A	INITIAL RELEASE PER ECN 845	8-19-09	<i>FB</i>

NOTES:

- FINISH BASE & LEVER ARE:
ZINC PLATE PER ASTM-B-633, TYPE III, SC 2, CLEAR TRIVALENT CHROMATE WITH SEALER. (RoHS COMPLIANT) FINISH SUFFIX: -Z3CT
THE ABOVE MENTIONED FINISH WILL BE SUPPLIED AS THE STANDARD FINISH, UPON DEPLETION OF EXISTING STOCK WHICH ARE FINISHED AS FOLLOW: ZINC PLATE PER ASTM-B-633, TYPE II, SC 2, YELLOW CHROMATE. FINISH SUFFIX -Z3Y.
THE LINK MADE OF STAINLESS STEEL HAVE NO FINISH.
- FOR THE APPLICATION OF ALTERNATIVE FINISHES, REMOVE SUFFIX -Z3CT FROM THE PART NO. AND ADD THE REQUIRED FINISH TO THE PART NO. SUFFIX. *EXAMPLE FOR BLACK ZINC TRIVALENT CHROMATE FINISH, THE PART NO. IS 7886-41-Z3BT.
- PLEASE VISIT WWW.DFCIS.COM/C7886-41 FOR A LIST OF AVAILABLE FINISHES.

PART NO.	MATERIAL		
	BASE & LEVER	LINK	RIVET
7886-41-Z3CT	PER A.I.S.I 1008/1010 STEEL.	17-7 ST. STEEL SPRING TEMPER	302 ST. STEEL.
7886-41-SS	302 ST. STEEL		

MAT'L AS NOTED.	TOLERANCES ON DIMENSIONS UNLESS OTHERWISE SPECIFIED X = ±2* .XX = ±.015 X/X = ±1/32 .XXX = ±.010 MACHINE FINISH .125		 DFCI SOLUTIONS INC. 425 UNION BOULEVARD WEST ISLIP, NEW YORK 11795				
HEAT TREAT NONE.	PART NO.	DRN <i>S. F. [Signature]</i>	DATE 8-19-09	TITLE L=7800 TOGGLE LATCH ASSY. 7886-41-Z3CT.			
FINISH PER NOTE 1.		CHK <i>F. Basile</i>	DATE 8-19-09				
<small>THE FASTENER PARTS SHOWN IN THIS PRINT ARE PROPRIETARY ARTICLES TO WHICH DFCI SOLUTIONS INC. RETAINS THE EXCLUSIVE RIGHTS OF MANUFACTURE, USE AND SALE. THE PRINT OR DRAWING IS SUBMITTED IN CONFIDENCE AND DOES NOT CONVEY A LICENSE OR PERMISSION TO MANUFACTURE THE FASTENER OR FASTENER PARTS.</small> © COPYRIGHT 2003, DFCI SOLUTIONS INC. ALL RIGHTS RESERVED.			DATE 8-19-09	SIZE A	FSCM NO 72794	DWG. NO. C7886-41	REV. A
		NEXT ASSY	USED ON	SALES	DATE	SCALE NTS	WT.

DATE: 07/01/06 FORM: DRAWING