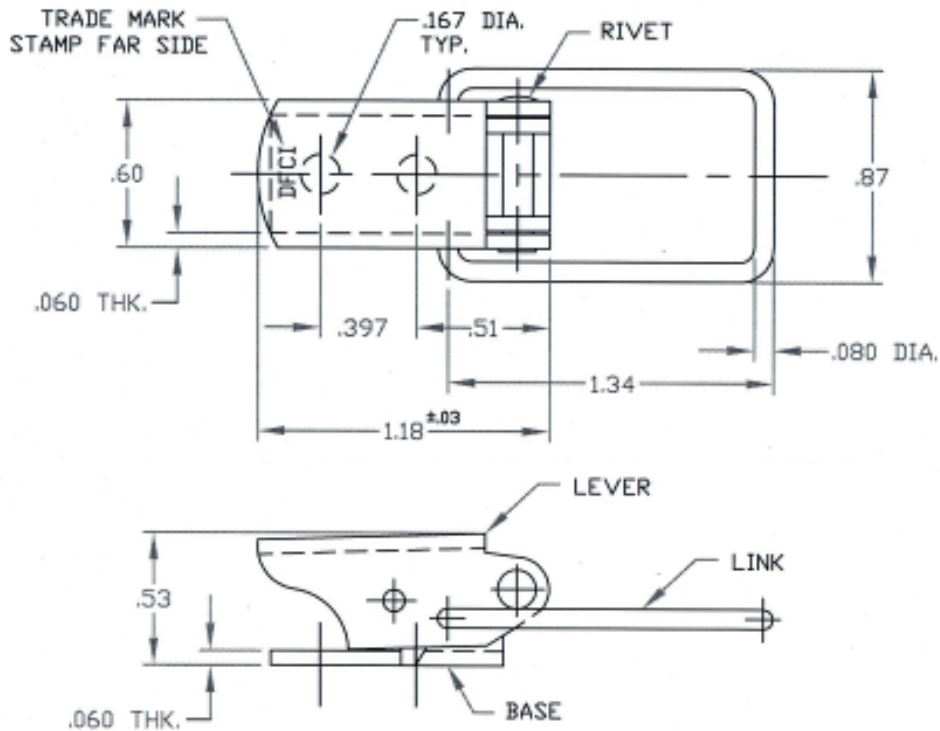



UNCONTROLLED

C7886-1 SHT. 1of2 REV. A

REVISIONS			
SYM	DESCRIPTION	DATE	APPROV
A	INITIAL RELEASE PER ECN 845	3-20-07	



FOR PART NO. REFER TO SHEET 2of2.

MAT'L PER NOTE 2.	TOLERANCES ON DIMENSIONS UNLESS OTHERWISE SPECIFIED X° = ±2° .XX = ±.015 X/X = ±1/32 .XXX = ±.010 MACHINE FINISH 125T		 DFCI SOLUTIONS INC. 425 UNION BOULEVARD WEST ISLIP, NEW YORK 11795	
HEAT TREAT NONE.	PART NO.	DRN S. FRANGIS DATE 3-20-07	TITLE L-7800 TOGGLE LATCH ASSY. 7886-1-Z3CT	
FINISH PER NOTE 1.		CHK J. Basil DATE 3-20-07	SIZE A	FSCM NO. 72794
<small>THE FASTENER PARTS SHOWN IN THIS PRINT ARE PROPRIETARY ARTICLES TO WHICH DFCI SOLUTIONS INC. RETAINS THE EXCLUSIVE RIGHTS OF MANUFACTURE, USE AND SALE. THE PRINT OR DRAWING IS SUBMITTED IN CONFIDENCE AND DOES NOT CONVEY A LICENSE OR PERMISSION TO MANUFACTURE THE PARTS. COPYRIGHT © 2007, DFCI SOLUTIONS INC. ALL RIGHTS RESERVED.</small>		ENG K. Colburn DATE 3-20-07	DWG. NO. C7886-1	REV. A
	NEXT ASSY	USED ON	QC B. Hildner DATE 3/20/07	SCALE NTS
DATE: 07/01/06	FORM: DRAWING	SALES	WT.	SHEET 1 OF 2



UNCONTROLLED

REVISIONS			
SYM	DESCRIPTION	DATE	APPROV
A	INITIAL RELEASE PER ECN 845	3-20-07	

NOTES:

- FINISH BASE & LEVER ARE:
ZINC PLATE PER ASTM-B-633, TYPE III, SC 2, CLEAR TRIVALENT CHROMATE WITH SEALER. (RoHS COMPLIANT) FINISH SUFFIX: -Z3CT
THE ABOVE MENTIONED FINISH WILL BE SUPPLIED AS THE STANDARD FINISH, UPON DEPLETION OF EXISTING STOCK WHICH ARE FINISHED AS FOLLOWS: ZINC PLATE PER ASTM-B-633, TYPE II, SC 2, YELLOW CHROMATE. FINISH SUFFIX -Z3Y.
THE LINK MADE OF STAINLESS STEEL HAVE NO FINISH.
- FOR THE APPLICATION OF ALTERNATIVE FINISHES, REMOVE SUFFIX -Z3CT FROM THE PART NO. AND ADD THE REQUIRED FINISH TO THE PART NO. SUFFIX. *EXAMPLE FOR BLACK ZINC TRIVALENT CHROMATE FINISH, THE PART NO. IS 7886-1-Z3BT.
- PLEASE VISIT WWW.DFCIS.COM/C7886-1 FOR A LIST OF AVAILABLE FINISHES.

PART NO.	MATERIAL		
	BASE & LEVER	LINK	RIVET
7886-1-Z3CT	PER A.I.S.I 1008/1010 STEEL.	17-7 ST. STEEL SPRING TEMPER	302 ST. STEEL.
7886-1-SS	302 ST. STEEL		

MAT'L AS NOTED.	TOLERANCES ON DIMENSIONS UNLESS OTHERWISE SPECIFIED X = ±2* .XX = ±.015 X/X = ±1/32 .XXX = ±.010 MACHINE FINISH 125/		 DFCI SOLUTIONS INC. 425 UNION BOULEVARD WEST ISLIP, NEW YORK 11795	
HEAT TREAT NONE.	PART NO.	DRN <i>S. FRANCO</i> DATE 3-20-07		
FINISH PER NOTE 1.		ENG <i>Randy Carlbourn</i> DATE 3-20-07	MFG <i>JS</i> DATE 3-20-07	
<small>THE FASTENER PARTS SHOWN IN THIS PRINT ARE PROPRIETARY ARTICLES TO WHICH DFCI SOLUTIONS INC. RETAINS THE EXCLUSIVE RIGHTS OF MANUFACTURE, USE AND SALE. THE PRINT OR DRAWING IS SUBMITTED IN CONFIDENCE AND DOES NOT CONVEY A LICENSE OR PERMISSION TO MANUFACTURE THE FASTENERS OR FASTENER PARTS. © COPYRIGHT 2003, DFCI SOLUTIONS INC. ALL RIGHTS RESERVED.</small>	NEXT ASSY	USED ON <i>B. Wilder</i> DATE 3/20/07	DATE 3/20/07	 DFCI SOLUTIONS INC. 425 UNION BOULEVARD WEST ISLIP, NEW YORK 11795
	APPLICATION BLOCK	SALES	DATE	TITLE L-7800 TOGGLE LATCH ASSY. 7886-1-Z3CT
			SIZE A FSCM NO 72794 DWG. NO. C7886-1 REV. A SCALE NTS WT. SHEET 2 OF 2	

DATE: 07/01/08 FORM: DRAWING