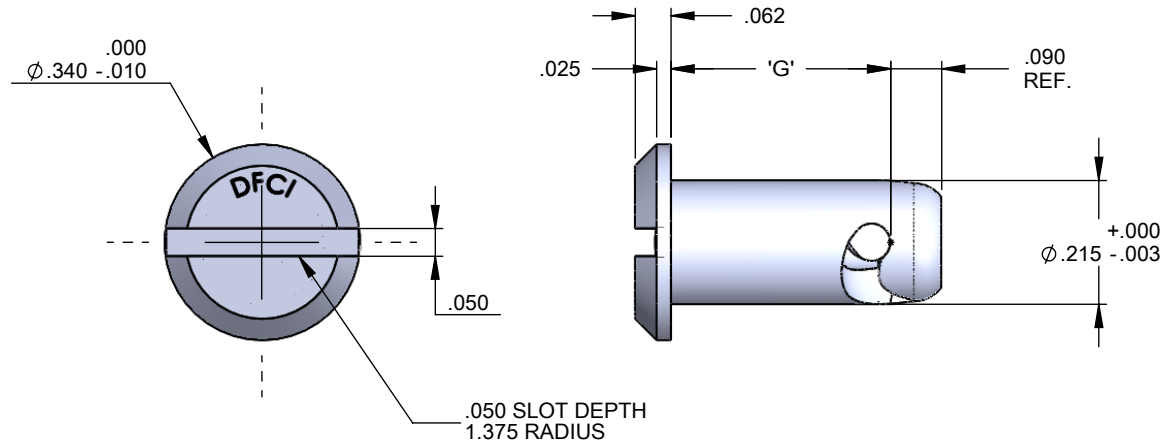
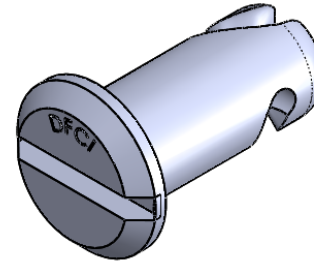


UNCONTROLLED

REVISIONS			
SYS	DESCRIPTION	DATE	APPROV
F	PER ECN 1191	07/21/10	F.B.



FOR PART NO. REFER TO SHEET 2 OF 2

MATERIAL:	A.I.S.I 8620, 4037 STEEL OR 303 ST. STEEL
HEAT TREAT:	PER NOTE 1
FINISH:	SEE NOTE 2
<small>THE FASTENER PARTS SHOWN IN THIS PRINT ARE PROPRIETARY ARTICLES TO WHICH DFCI SOLUTIONS INC., RETAINS THE EXCLUSIVE RIGHTS OF MANUFACTURE, USE AND SALE. THE PRINT OR DRAWING IS SUBMITTED IN CONFIDENCE AND DOES NOT CONVEY A LICENSE OR PERMISSION TO MANUFACTURE THE FASTENER OR FASTENER PARTS.</small>	
<small>(C) COPYRIGHT 2009, DFCI SOLUTIONS INC. ALL RIGHTS RESERVED.</small>	

TOLERANCES ON DIMENSIONS UNLESS OTHERWISE SPECIFIED			
X* = ±2°	.XX = ±.015	MACHINE FINISH = .125 ✓	
X/X = ±1/32	.XXX = ±.010		
PART NO.	3506-xx-Z3CT	DRN	W. Zhindon
		DATE	07/20/10
		CHK.	Frank Basile
		DATE	07/21/10
		ENG.	Robert Altabrand
		DATE	07/21/10
		MFG.	Bill Velazquez
		DATE	07/21/10
NEXT ASSY	USED ON	Q.C.	Robert Altabrand
		DATE	07/21/10
APPLICATION BLOCK		SALES.	

		DFCI SOLUTIONS INC. 425 UNION BOULEVARD. WEST ISLIP, NEW YORK 11795	
		TITLE PA-3500 PANEL LINE STUD, 3506-xx-Z3CT	
SIZE	FSCM NO.	DWG. NO.	REV
A	72794	C3506	F
SCALE: NTS		WEIGHT:	SHEET 1 OF 2

UNCONTROLLED

REVISIONS			
SYS	DESCRIPTION	DATE	APPROV
F	PER ECN 1191	07/21/10	F.B.

PART NO	G
3506-28-Z3CT	.280
3506-29-Z3CT	.290
3506-30-Z3CT	.300
3506-31-Z3CT	.310
3506-32-Z3CT	.320
3506-33-Z3CT	.330
3506-34-Z3CT	.340
3506-35-Z3CT	.350
3506-36-Z3CT	.360
3506-37-Z3CT	.370
3506-38-Z3CT	.380
3506-39-Z3CT	.390
3506-40-Z3CT	.400
3506-41-Z3CT	.410
3506-42-Z3CT	.420
3506-43-Z3CT	.430
3506-44-Z3CT	.440
3506-45-Z3CT	.450
3506-46-Z3CT	.460
3506-47-Z3CT	.470
3506-48-Z3CT	.480
3506-49-Z3CT	.490
3506-50-Z3CT	.500
3506-51-Z3CT	.510
3506-52-Z3CT	.520
3506-53-Z3CT	.530
3506-54-Z3CT	.540

PART NO	G
3506-55-Z3CT	.550
3506-56-Z3CT	.560
3506-57-Z3CT	.570
3506-58-Z3CT	.580
3506-59-Z3CT	.590
3506-60-Z3CT	.600
3506-61-Z3CT	.610
3506-62-Z3CT	.620
3506-63-Z3CT	.630
3506-65-Z3CT	.650
3506-67-Z3CT	.670
3506-69-Z3CT	.690
3506-72-Z3CT	.720
3506-75-Z3CT	.750
3506-81-Z3CT	.810
3506-83-Z3CT	.830
3506-109-Z3CT	1.090
3506-170-Z3CT	1.700

NOTES:

- HEAT TREAT:
A: STEEL STUD HARDNESS = ROCKWELL C30-38
B: NO HEAT TREATMENT ON STUD MADE FROM ST. STEEL
- FINISH:
ZINC PLATE PER ASTM-B-633, TYPE III, SC 2, CLEAR TRIVALENT CHROMATE WITH SEALER. (RoHS COMPLIANT) FINISH SUFFIX -Z3CT.

THE ABOVE MENTIONED FINISH WILL BE SUPPLIED AS THE STANDARD FINISH, UPON DEPLETION OF EXISTING STOCK WHICH ARE FINISHED AS FOLLOW: CADMIUM PLATE PER QQ-P-416, TYPE I, CLASS 2, CLEAR CHROMATE. (FINISH SUFFIX: -C3C)
- FOR PART NO. OF STUD MADE FROM ST. STEEL, REMOVE SUFFIX -Z3CT FORM PART NO. AND ADD" -SS" EXAMPLE: 3506-25-SS
- FOR THE APPLICATION OF ALTERNATIVE FINISHES, REMOVE SUFFIX -Z3CT FROM THE PART NO. & ADD THE REQUIRED FINISH TO THE SUFFIX.

EXAMPLE: FOR YELLOW ZINC TRIVALENT CHROMATE FINISH, THE PART NO IS 3503-28-Z3YT.
- PLEASE VISIT WWW.DFCIS.COM/C3506 FOR A LIST OF AVAILABLE FINISHES

MATERIAL: A.I.S.I 8620, 4037 STEEL OR 303 ST. STEEL

HEAT TREAT: PER NOTE 1

FINISH: SEE NOTE 2

THE FASTENER PARTS SHOWN IN THIS PRINT ARE PROPRIETARY ARTICLES TO WHICH DFCI SOLUTIONS INC., RETAINS THE EXCLUSIVE RIGHTS OF MANUFACTURE, USE AND SALE. THE PRINT OR DRAWING IS SUBMITTED IN CONFIDENCE AND DOES NOT CONVEY A LICENSE OR PERMISSION TO MANUFACTURE THE FASTENER OR FASTENER PARTS.

(C) COPYRIGHT 2009, DFCI SOLUTIONS INC. ALL RIGHTS RESERVED.

TOLERANCES ON DIMENSIONS UNLESS OTHERWISE SPECIFIED

X* = ±2* .XX = ±.015
X/X = ±1/32 .XXX = ±.010 MACHINE FINISH = .125

PART NO.	3506-xx-Z3CT	DRN	W. Zhindon	DATE	07/20/10
		CHK.	Frank Basile	DATE	07/21/10
		ENG.	Robert Alldorand	DATE	07/21/10
		MFG.	Bill Velazquez	DATE	07/21/10
NEXT ASSY	USED ON	Q.C.	Robert Alldorand	DATE	07/21/10
APPLICATION BLOCK		SALES.		DATE	



DFCI SOLUTIONS INC.

425 UNION BOULEVARD.
WEST ISLIP, NEW YORK 11795

TITLE PA-3500 PANEL LINE STUD,
3506-xx-Z3CT

SIZE	FSCM NO	DWG. NO.	REV
A	72794	C3506	F

SCALE: NTS

WEIGHT:

SHEET 2 OF 2