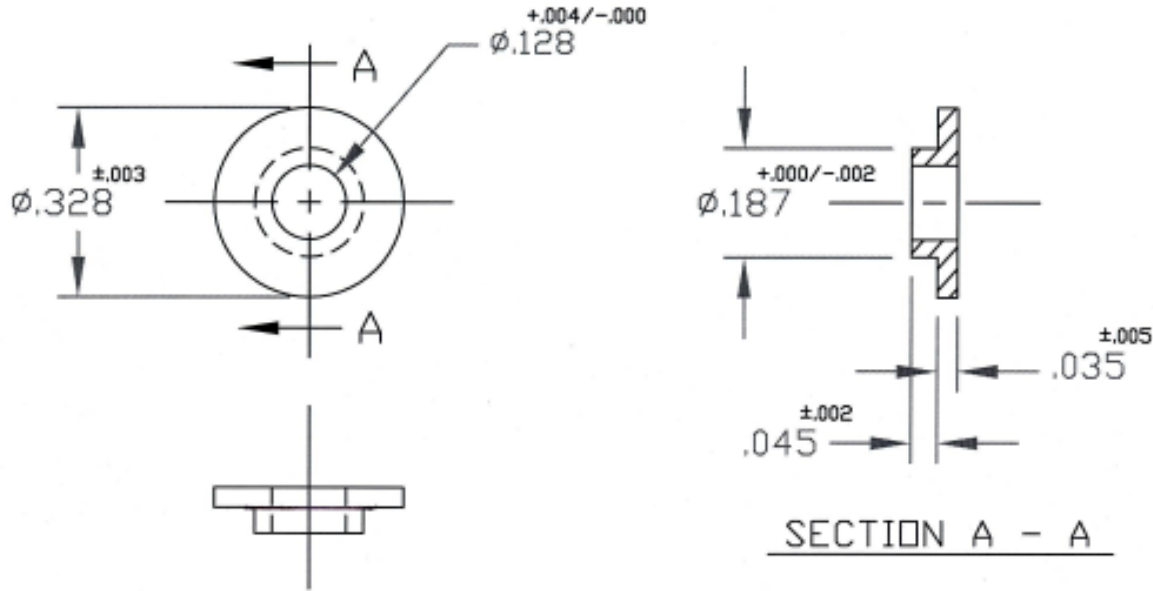


UNCONTROLLED

C2600F-5 REV. B

REVISIONS			
SYM	DESCRIPTION	DATE	APPROV
B	CHNG FINISH PER ECN 1090	6-3-08	



PART NO.
2600-18F-5-Z3CT

MATL PER A.I.S.I 1117 OR 1215 STEEL.		TOLERANCES ON DIMENSIONS UNLESS OTHERWISE SPECIFIED $X^* = \pm 2^*$.XX = $\pm .015$ $X/X = \pm 1/32$.XXX = $\pm .010$ MACHINE FINISH 1257		DFCI SOLUTIONS INC. 425 UNION BOULEVARD WEST ISLIP, NEW YORK 11795	
HEAT TREAT NONE.		PART NO.		DATE 12-19-05	
FINISH ZINC PLATE PER NOTE 1.		DRN S. FRADLEY		DATE 6-4-08	
<small>THE PARTS SHOWN IN THIS PRINT ARE PROPRIETARY ARTICLES TO WHICH DFCI SOLUTIONS INC. RETAINS THE EXCLUSIVE RIGHTS OF MANUFACTURE, USE AND SALE. THE PRINT OR DRAWING IS SUBMITTED IN CONFIDENCE AND DOES NOT CONVEY A LICENSE OR PERMISSION TO MANUFACTURE THE PARTS OR PARTS PARTS.</small>		CHK F. Basil		DATE 6-4-08	
<small>© COPYRIGHT 2003, DFCI SOLUTIONS INC. ALL RIGHTS RESERVED.</small>		ENG K. Colborn		DATE 6-4-08	
DATE: 07/01/08		MFR B. 2		DATE 6-4-08	
FORM: DRAWING		QC B. Hildebrand		DATE 6/4/08	
APPLICATION BLOCK		SALES		DATE	
NEXT ASSY		USED ON		SIZE A	
SCALE NTS		WT.		FSCM NO 72794	
SHEET 1 OF 1		DWG. NO. C2600F-5		REV. B	

The parts shown in this print are proprietary articles to which DFCI Solutions, Inc. retains the exclusive rights of manufacture, use and sale. The print or drawing is submitted in confidence and does not convey a license or premission to manufacture the parts. Copyright © 2008 by DFCI Solutions, Inc. All rights reserved.