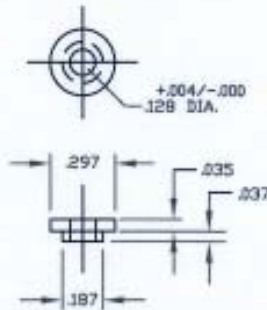


UNCONTROLLED

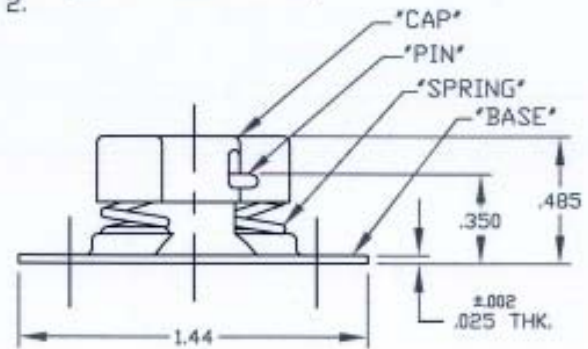
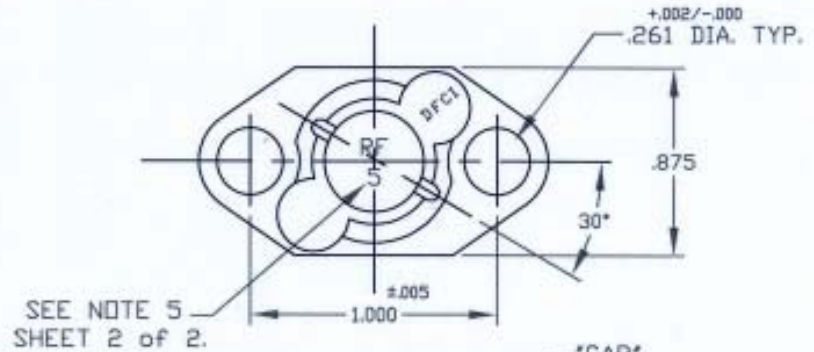
C2500F SHT. 1of2 REV. *B*

REVISIONS			
SYM	DESCRIPTION	DATE	APPROV
B	ADD SHT. 2 PER ECN 962	5-17-06	<i>R. OLSEN</i>

SPACER P/N	MATERIAL
2500-18F-5-C3C	A.I.S.I C1117, C11L17, OR 12L14, STEEL.



SPACER DETAIL
PER NOTE 2.
SHEET 2 of 2.



RECEPTACLE ASSY. P/N
2500-18F-C3C

MAT'L SEE SHT. 2, NOTE 1.		TOLERANCES ON DIMENSIONS UNLESS OTHERWISE SPECIFIED X* = ±2* .XX = ±.015 CONCENTRICITY F.I.M. .005 X/X = ±1/64 .XXX = ±.010 MACHINE FINISH 125/		DFCI SOLUTIONS INC. 425 UNION BOULEVARD WEST ISLIP, NEW YORK 11795	
HEAT TREAT SEE SHT. 2, NOTE 1.		PART NO.	DRN <i>S. FRANZ</i> DATE 1-6-05	SU-2300 RECEPTACLE ASSY. 2500-18F-C3C.	
FINISH CADMIUM PLATE PER QQ-P-416, TYPE 1, CLASS 2, CLEAR CHROMATE.		CHK <i>R. OLSEN</i> DATE 5-17-06	ENG <i>R. OLSEN</i> DATE 5/17/06	SIZE A	FSCM NO 72794
<small>THE FASTENER PARTS SHOWN IN THIS PRINT ARE PROPRIETARY ARTICLES TO WHICH DFCS SOLUTIONS INC. RETAINS THE EXCLUSIVE RIGHTS OF MANUFACTURE, USE AND SALE. THE PRINT OR DRAWING IS SUBMITTED IN CONFIDENCE AND DOES NOT CONVEY A LICENSE OR PERMISSION TO MANUFACTURE THE FASTENER OR FASTENER PARTS.</small> <small>© COPYRIGHT 2006, DFCS SOLUTIONS INC. ALL RIGHTS RESERVED.</small>		MFG <i>JS</i> DATE 5-17-06	OC <i>B. H. OLSEN</i> DATE 5/17/06	DWG. NO. C2500F	REV. B
APPLICATION BLOCK		SALES	DATE	SCALE NTS	WT.
				SHEET 1 OF 2	


UNCONTROLLED

REVISIONS			
SYM	DESCRIPTION	DATE	APPROV
B	ADD SHT. 2 PER ECN 962	5-17-06	<i>R. OLSEN</i>

NOTES:

1. MATERIAL:
 "BASE" S.A.E 4130 STEEL, HEAT TREAT TO ROCKWELL C37-40.
 "PIN" & "SPRING" STEEL MUSIC WIRE PER ASTM-A-228.
 "CAP" PER S.A.E 1008/1010 STEEL.
2. TWO (2) SPACERS P/N 2500-18F-5-C3C ARE SUPPLIED W/EACH 2500-18F-C3C RECEPTACLE.
3. FOR THE APPLICATION OF ALTERNATIVE FINISHES REMOVE THE SUFFIX -C3C AND ADD THE REQUIRED FINISH SUFFIX. "EXAMPLE 2500-18F-Z3B".
4. PLEASE VISIT www.dfci.com/dzfinish.html FOR A LIST OF AVAILABLE FINISHES.
5. PART WILL BE MARKED AS SHOWN (RF 5) UNTIL DEPLETION OF EXISTING STOCK. THEREAFTER PART WILL BE MARKED WITH FOLLOWING DESIGNATION "F5".

RECEPTACLE ASSY. P/N
2500-18F-C3C

MATL PER NOTE 1.		TOLERANCES ON DIMENSIONS UNLESS OTHERWISE SPECIFIED $X = \pm 2^*$.XX = $\pm .015$ CONCENTRICITY F.I.M. .005 $X/X = \pm 1/64$.XXX = $\pm .010$ MACHINE FINISH 125/		 DFCI SOLUTIONS INC. 425 UNION BOULEVARD WEST ISLIP, NEW YORK 11795			
HEAT TREAT PER NOTE 1.		PART NO.	DRN <i>S. F. [Signature]</i> DATE 1-6-05	SU-2300 RECEPTACLE ASSY. 2500-18F-C3C.			
FINISH		CHK <i>R. OLSEN</i> DATE 5/17/06	ENG <i>R. OLSEN</i> DATE 5/17/06				
CADMIUM PLATE PER QQ-P-416, TYPE 1, CLASS 2, CLEAR CHOMATE.		MFG <i>JS</i> DATE 5-17-06	DATE 5-17-06	SIZE A	FSCM NO 72794	DWG. NO. C2500F	REV. B
<small>THE FACTORED PARTS SHOWN IN THIS PRINT ARE PROPRIETARY ARTICLES TO WHICH DFCI SOLUTIONS INC. RETAINS THE EXCLUSIVE RIGHTS OF MANUFACTURE, USE AND SALE. THE PRINT OR DRAWING IS SUBMITTED IN CONFIDENCE AND DOES NOT CONVEY A LICENSE OR PERMISSION TO MANUFACTURE THE FACTORED OR FACTORED PARTS.</small>		NEXT ASSY USED ON	DATE 5/17/06	SCALE NTS	WT.	SHEET 2 OF 2	
<small>© COPYRIGHT 2006, DFCI SOLUTIONS INC. ALL RIGHTS RESERVED.</small> DATE: 11/01/03 FORM: DRAWING		APPLICATION BLOCK	SALES				