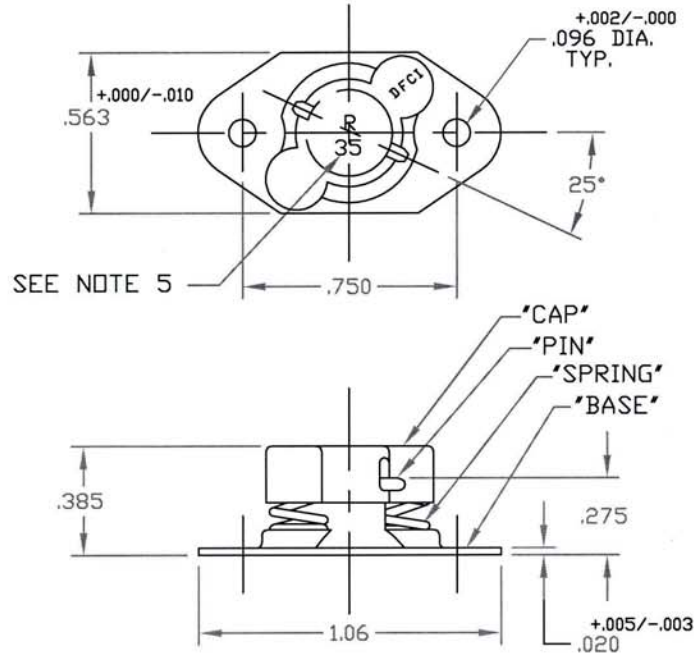


UNCONTROLLED

C2350 SHT. 1of2 REV. D

REVISIONS			
SYM	DESCRIPTION	DATE	APPROV
D	ADD TOL. & WEIGHT ECN 1123	1-5-09	FB



FOR PART NO. REFER TO SHEET 2of2.

MAT'L PER NOTE 2.	TOLERANCES ON DIMENSIONS UNLESS OTHERWISE SPECIFIED		DFCI SOLUTIONS INC. 425 UNION BOULEVARD WEST ISLIP, NEW YORK 11795	
	$X^* = \pm 2^*$ $X/X = \pm 1/32$	$.XX = \pm .015$ $.XXX = \pm .010$		MACHINE FINISH 125
HEAT TREAT PER NOTE 2.	PART NO.	DRN S. FRANCIS	DATE 1-19-04	
FINISH PER NOTE 1.		CHK F. Basil	DATE 1-6-09	
		ENG P. J. J. J.	DATE 1/6/09	
<small>THE FASTENER PARTS SHOWN IN THIS PRINT ARE PROPRIETARY ARTICLES TO WHICH DFCI SOLUTIONS INC. RETAINS THE EXCLUSIVE RIGHTS OF MANUFACTURE, USE AND SALE. THE PRINT OR DRAWING IS SUBMITTED IN CONFIDENCE AND DOES NOT CONVEY A LICENSE OR PERMISSION TO MANUFACTURE THE FASTENER OR FASTENER PARTS.</small> <small>© COPYRIGHT 2009, DFCI SOLUTIONS INC. ALL RIGHTS RESERVED.</small>	NEXT ASSY	USED ON	DATE 1/15/09	
	APPLICATION BLOCK	SALES	DATE	
		SIZE A	FSCM NO. 72794	DWG. NO. C2350
		SCALE NTS	WT.	REV. D
			SHEET 1 OF 2	

DATE: 07/01/06 FORM: DRAWING

The parts shown in this print are proprietary articles to which DFCI Solutions, Inc. retains the exclusive rights of manufacture, use and sale. The print or drawing is submitted in confidence and does not convey a license or permission to manufacture the parts. Copyright © 2009 by DFCI Solutions, Inc. All rights reserved.


UNCONTROLLED

REVISIONS			
SYM	DESCRIPTION	DATE	APPROV
D	ADD TOL.& WEIGHT ECN 1123	1-5-09	<i>FB</i>

NOTES:

- FINISH:
ZINC PLATE PER ASTM-B-633, TYPE III, SC 2, CLEAR TRIVALENT CHROMATE WITH SEALER. (RoHS COMPLIANT) FINISH SUFFIX: -Z3CT
THE ABOVE MENTIONED FINISH WILL BE SUPPLIED AS THE STANDARD FINISH, UPON DEPLETION OF EXISTING STOCK WHICH ARE FINISHED AS FOLLOWS: CADMIUM PLATE PER QQ-P-416, TYPE I, CLASS 2, CLEAR CHROMATE. FINISH SUFFIX -C3C.
- MATERIAL:
"BASE" S.A.E 4130 STEEL, HEAT TREAT TO ROCKWELL C37-40.
"PIN" & "SPRING" STEEL MUSIC WIRE.
"CAP" PER S.A.E 1008/1010 STEEL.
- FOR THE APPLICATION OF ALTERNATIVE FINISHES, REMOVE SUFFIX -Z3CT FROM THE PART NO. AND ADD THE REQUIRED FINISH TO THE PART NO. SUFFIX. "EXAMPLE FOR BLACK ZINC TRIVALENT CHROMATE FINISH, THE PART NO. IS 2350-18-Z3BT
- PART WILL BE MARKED AS SHOWN (R 35) UNTILL DEPLETION OF EXISTING STOCK. THEREAFTER PART WILL BE MARKED WITH FOLLOWING DESIGNATION "35".
- PLEASE VISIT WWW.DFCIS.COM/C2350 FOR A LIST OF AVAILABLE FINISHES.

RECEPTACLE ASSY. P/N	WEIGHT (LBS.)
2350-18-Z3CT	.0065

MAT'L PER NOTE 2.		TOLERANCES ON DIMENSIONS UNLESS OTHERWISE SPECIFIED X" = ±2" .XX = ± .015 X/X = ±1/32 .XXX = ± .010 MACHINE FINISH 125		 DFCI SOLUTIONS INC. 425 UNION BOULEVARD WEST ISLIP, NEW YORK 11795	
HEAT TREAT PER NOTE 2.		PART NO.	DRN <i>S. Francis</i> DATE 1-19-04	TITLE SU-2300 RECEPTACLE ASSY.	
FINISH PER NOTE 1.		CHK <i>F. Basil</i> DATE 1-6-09	ENG <i>B. G. Baker</i> DATE 1/6/09	2350-18-Z3CT	
NEXT ASSY USED ON		MFG <i>P. H. Debb</i> DATE 1/6/09	SALES <i>P. H. Debb</i> DATE 1/6/09	SIZE A FSCM NO 72794 DWG. NO. C2350 REV. D	
APPLICATION BLOCK		DATE		SCALE NTS WT.	SHEET 2 OF 2

DATE: 07/01/06 FORM: DRAWING