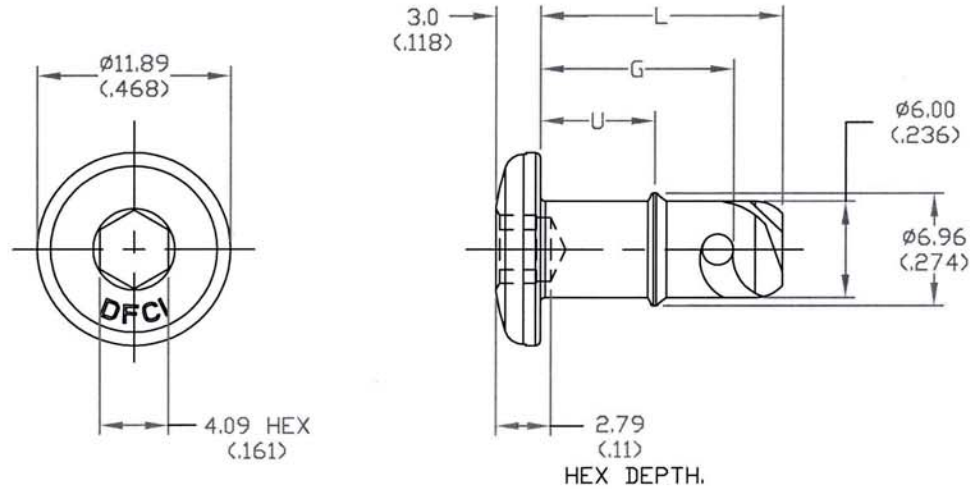



UNCONTROLLED

REVISIONS			
SYM	DESCRIPTION	DATE	APPROV
C	ADD WEIGH PER ECN 1110	10-23-08	FB



SEE SHEET 2 FOR PART NUMBERS.

ALL TOLERANCES ARE IN INCHES

MAT'L A.I.S.I 8620 STEEL.	TOLERANCES ON DIMENSIONS UNLESS OTHERWISE SPECIFIED X = $\pm 2^*$.XX = $\pm .015$ X/X = $\pm 1/32$.XXX = $\pm .010$ MACHINE FINISH 125		 DFCI SOLUTIONS INC. 425 UNION BOULEVARD WEST ISLIP, NEW YORK 11795	
HEAT TREAT CASE HARDENED.	PART NO.	DRN S. FRANAS	DATE 3-30-06	TYPE PX-1600 SOCKET HD STUD 1631-62xx-Z3CT
FINISH PER NOTE 1.		CHK F. Basils	DATE 10-29-08	
<small>THE FASTENER PARTS SHOWN IN THIS PRINT ARE PROPRIETARY ARTICLES TO WHICH DFCI SOLUTIONS INC. RETAINS THE EXCLUSIVE RIGHTS OF MANUFACTURE, USE AND SALE. THE PRINT OR DRAWING IS SUBMITTED IN CONFIDENCE AND DOES NOT CONVEY A LICENSE OR PERMISSION TO MANUFACTURE THE FASTENER OR FASTENER PARTS.</small> © COPYRIGHT 2003, DFCI SOLUTIONS INC. ALL RIGHTS RESERVED.	NEXT ASSY	USED ON	DATE 10/29/08	SIZE A
	APPLICATION BLOCK	SALES	DATE 10/29/08	FSCM NO 72794
				DWG. NO. C1631-62
				REV. C
				SCALE NTS
				WT.
				SHEET 1 OF 2

DATE: 07/01/06 FORM: DRAWING

UNCONTROLLED

REVISIONS

SYM	DESCRIPTION	DATE	APPROV
C	ADD WEIGH PER ECN 1110	10-23-08	


PART NO.	L	G	U	WEIGHT	
				LBS.	GRAMS
1631-6209-Z3CT	12 (.47)	9 (.354)	4 (.16)	(.0116)	5.262
1631-6210-Z3CT	13 (.51)	10 (.394)	5 (.20)	(.0121)	5.488
1631-6211-Z3CT	14 (.55)	11 (.433)	6 (.24)	(.0126)	5.715
1631-6212-Z3CT	15 (.59)	12 (.472)	7 (.28)	(.0131)	5.942
1631-6213-Z3CT	16 (.63)	13 (.512)	8 (.32)	(.0136)	6.169
1631-6214-Z3CT	17 (.67)	14 (.551)	9 (.35)	(.0140)	6.350
1631-6215-Z3CT	18 (.71)	15 (.590)	10 (.39)	(.0145)	6.577
1631-6216-Z3CT	19 (.75)	16 (.630)	11 (.43)	(.0150)	6.804
1631-6217-Z3CT	20 (.79)	17 (.669)	12 (.47)	(.0155)	7.031
1631-6218-Z3CT	21 (.83)	18 (.709)	13 (.51)	(.0160)	7.257
1631-6219-Z3CT	22 (.87)	19 (.748)	14 (.55)	(.0165)	7.484
1631-6220-Z3CT	23 (.91)	20 (.787)	15 (.59)	(.0170)	7.711
1631-6221-Z3CT	24 (.94)	21 (.827)	16 (.63)	(.0175)	7.938
1631-6222-Z3CT	25 (.98)	22 (.866)	17 (.67)	(.0179)	8.119
1631-6223-Z3CT	26 (1.02)	23 (.906)	18 (.71)	(.0184)	8.346
1631-6224-Z3CT	27 (1.06)	24 (.945)	19 (.75)	(.0189)	8.573

PART NO.	L	G	U	WEIGHT	
				LBS.	GRAMS
1631-6225-Z3CT	28 (1.10)	25 (.984)	20 (.79)	(.0194)	8.800
1631-6226-Z3CT	29 (1.14)	26 (1.024)	21 (.83)	(.0199)	9.026
1631-6227-Z3CT	30 (1.18)	27 (1.063)	22 (.87)	(.0204)	9.253
1631-6228-Z3CT	31 (1.22)	28 (1.102)	23 (.91)	(.0209)	9.480
1631-6229-Z3CT	32 (1.26)	29 (1.141)	24 (.95)	(.0214)	9.707
1631-6230-Z3CT	33 (1.30)	30 (1.181)	25 (.98)	(.0218)	9.888
1631-6231-Z3CT	34 (1.34)	31 (1.220)	26 (1.02)	(.0223)	10.115
1631-6232-Z3CT	35 (1.38)	32 (1.260)	27 (1.06)	(.0228)	10.342
1631-6238-Z3CT	41 (1.61)	38 (1.496)	33 (1.30)	(.0258)	11.703

NOTES:

- FINISH:
ZINC PLATE PER ASTM-B-633, TYPE III, SC 2, CLEAR TRIVALENT CHROMATE WITH SEALER. (RoHS COMPLIANT)
- PLEASE VISIT www.dfci.com/dzfinish.html FOR A LIST OF AVAILABLE FINISHES.
- ALL PRIMARY DIMENSION ARE IN MILLIMETERS AND DIMENSION SHOWN BETWEEN (xxx) SHOWN ARE IN INCHES.

ALL TOLERANCES ARE IN INCHES

MAT'L A.I.S.I 8620 STEEL.	TOLERANCES ON DIMENSIONS UNLESS OTHERWISE SPECIFIED X* = ±2* .XX = ±.015 X/X = ±1/32 .XXX = ±.010 MACHINE FINISH 125T		 DFCI SOLUTIONS INC. 425 UNION BOULEVARD WEST ISLIP, NEW YORK 11795	
HEAT TREAT CASE HARDENED.	PART NO.	DRN S. FRANCIS	DATE 3-30-06	TYPE PX-1600 SOCKET HD STUD 1631-62xx-Z3CT
FINISH PER NOTE 1.		CHK F. BOASE	DATE 10-29-08	
THE FASTENER PARTS SHOWN IN THIS PRINT ARE PROPRIETARY ARTICLES TO WHICH DFCI SOLUTIONS INC. RETAINS THE EXCLUSIVE RIGHTS OF MANUFACTURE, USE AND SALE. THE PRINT OR DRAWING IS SUBMITTED IN CONFIDENCE AND DOES NOT CONVEY A LICENSE OR PERMISSION TO MANUFACTURE THE FASTENER OR FASTENER PARTS. © COPYRIGHT 2003, DFCI SOLUTIONS INC. ALL RIGHTS RESERVED. DATE: 07/01/06 FORM: DRAWING	NEXT ASSY	USED ON	DATE 10/29/08	SIZE A
	APPLICATION BLOCK	SALES	DATE	FSCM NO. 72794
				REV. C
				SCALE NTS
				WT.
				SHEET 2 OF 2