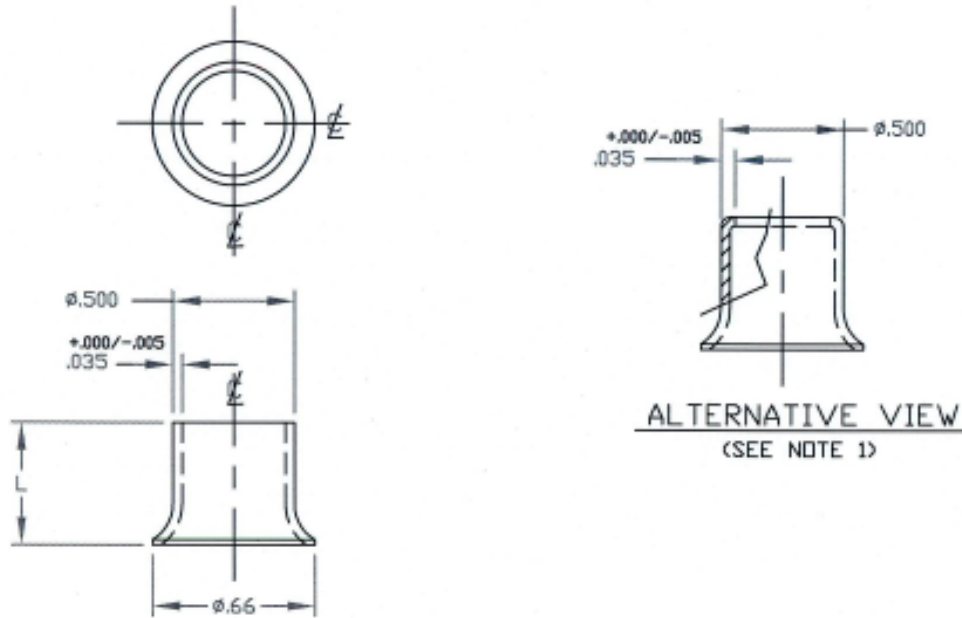


UNCONTROLLED

C1271-65 REV. *B*

REVISIONS			
SYM	DESCRIPTION	DATE	APPROV
B	ADD P/N PER ECN 1029.	3-8-07	<i>R. ROLESBY</i>



PART NO.	L	MATERIAL
1271-65218	.218	ALUM.
1271-65250	.250	
1271-65312	.312	
1271-65375	.375	
1271-65500	.500	
1271-65218-RN	.218	COPPER NICKEL
1271-65250-RN	.250	
1271-65312-RN	.312	
1271-65375-RN	.375	
1271-65500-RN	.500	

NOTES:

- ALTERNATE VIEW SHOWING CHAMFER WHEN GROMMETS ARE MADE OF ALUMINUM OR COPPER STRIP, A SLIGHT IRREGULAR LEDGE IS PERMISSIBLE AND DOES NOT AFFECT THE USE OF THE GROMMET.

MATERIAL 3003H14 - 1100H14 ALUM. OR COPPER NICKEL.		TOLERANCES ON DIMENSIONS UNLESS OTHERWISE SPECIFIED X = $\pm 2^*$ .XX = $\pm .015$ X/X = $\pm 1/32$ .XXX = $\pm .010$ MACHINE FINISH 125T		DFCI SOLUTIONS INC. 425 UNION BOULEVARD WEST ISLIP, NEW YORK 11795	
HEAT TREAT NONE.		PART NO.	DRN <i>S. Francis</i> DATE 11-30-05	TITLE ST-1200 LINE FULL GROMMET, 1271-65xxx.	
FINISH CLEAN AND FREE OF BURRS.			CHK <i>F. Brasil</i> DATE 3/27/07	SIZE A	FSCM NO 72794
<small>THE FASTENER PARTS SHOWN IN THIS PRINT ARE PROPRIETARY ARTICLES TO WHICH DFCI SOLUTIONS INC. RETAINS THE EXCLUSIVE RIGHTS OF MANUFACTURE, USE AND SALE. THE PRINT OR DRAWING IS SUBMITTED IN CONFIDENCE AND DOES NOT CONVEY A LICENSE OR PERMISSION TO MANUFACTURE THE PARTS OR FACTORY PARTS.</small>			ENG <i>R. ROLESBY</i> DATE 3/27/07	DWG. NO. C1271-65	REV. B
	NEXT ASSY	USED ON	MFG <i>JS</i> DATE 3-27-07	SCALE NTS	WT.
	APPLICATION BLOCK	SALES	QC <i>B. Hilde</i> DATE 3/29/07	SHEET 1 OF 1	

DATE: 07/01/06 FORM: DRAWING