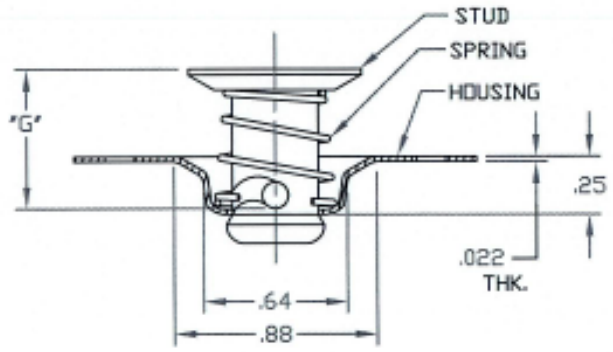
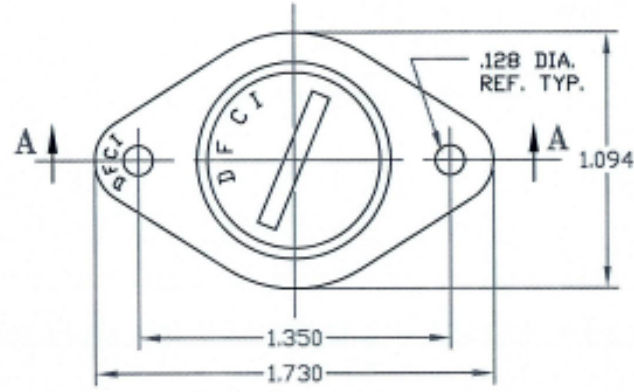


UNCONTROLLED

C1258-F6 SHT. 1of2 REV. B

REVISIONS			
SYM	DESCRIPTION	DATE	APPROV
B	CHNG FINISH PER ECN 1052	8-9-07	R. OLSEN



SECTION A-A  
UN-LOCKED POSITION

FOR PART NO. REFER TO SHEET 2 of 2.

MATERIAL PER NOTE 1.	TOLERANCES ON DIMENSIONS UNLESS OTHERWISE SPECIFIED		<b>DFCI SOLUTIONS INC.</b> 425 UNION BOULEVARD WEST ISLIP, NEW YORK 11795
	$X' = \pm 2'$ $.XX = \pm .015$ $X/X = \pm 1/32$ $.XXX = \pm .010$	MACHINE FINISH 125T	
HEAT TREAT PER NOTE 2.	PART NO.	DRN S. Francis DATE 1-14-04	REV. B
FINISH PER NOTE 3.		CHK F. Basile DATE 8-3-07	
		ENG R. OLSEN DATE 8/13/07	SIZE A
		MFG A. Hill DATE 8/13/07	FSCM NO 72794
		DATE 8/13/07	DWG. NO. C1258-F6
	NEXT ASSY	USED ON	SCALE NTS
	APPLICATION BLOCK	SALES	WT.
		DATE	SHEET 1 OF 2

DATE: 07/01/06 FORM: DRAWING


UNCONTROLLED

REVISIONS			
SYM	DESCRIPTION	DATE	APPROV
B	CHNG FINISH PER ECN 1052	8-9-07	<i>R. OLSEN</i>

STUD ASSY. P/N	*G*
1258-F640-Z3CT	.400
1258-F645-Z3CT	.450
1258-F650-Z3CT	.500
1258-F655-Z3CT	.550
1258-F660-Z3CT	.600
1258-F665-Z3CT	.650
1258-F670-Z3CT	.700
1258-F675-Z3CT	.750
1258-F680-Z3CT	.800
1258-F685-Z3CT	.850

NOTES:

- MATERIAL:  
 STUD: PER A.I.S.I 8620 STEEL.  
 HOUSING: PER A.I.S.I 1008 OR 1010 STEEL.  
 SPRING: ST. STEEL 300 SERIES, SPRING TEMPER.
- HEAT TREAT:  
 STUD ONLY, ROCKWELL C27 - 33.
- FINISH: STUD AND HOUSING:  
 ZINC PLATE PER ASTM-B-633, TYPE III, SC 2,  
 CLEAR TRIVALENT CHROMATE WITH SEALER.  
 (ROHS COMPLIANT) FINISH SUFFIX: -Z3CT  
 THE ABOVE MENTIONED FINISH WILL BE SUPPLIED  
 AS THE STANDARD FINISH  
 UPON DEPLETION OF EXISTING STOCK WHICH ARE  
 FINISHED AS FOLLOWS:  
 ZINC PLATE PER ASTM-B-633, TYPE III, SC 2,  
 CLEAR CHROMATE. (FINISH SUFFIX: -Z3C)  
FINISH: SPRING:  
 NATURAL.
- FOR THE APPLICATION OF ALTERNATIVE FINISHES,  
 REMOVE SUFFIX -Z3CT FROM THE PART NO.  
 AND ADD THE REQUIRED FINISH TO THE PART NO. SUFFIX.  
 \*EXAMPLE FOR BLACK ZINC TRIVALENT CHROMATE.  
 1258-F640-Z3BT.
- PLEASE VISIT [WWW.DFCIS.COM/C1258-F6](http://WWW.DFCIS.COM/C1258-F6) FOR A LIST OF  
 AVAILABLE FINISHES.

MAT'L PER NOTE 1.		TOLERANCES ON DIMENSIONS UNLESS OTHERWISE SPECIFIED $X = \pm 2^*$ .XX = $\pm .015$ $X/X = \pm 1/32$ .XXX = $\pm .010$ MACHINE FINISH 1257		 <b>DFCI SOLUTIONS INC.</b> 425 UNION BOULEVARD WEST ISLIP, NEW YORK 11795	
HEAT TREAT PER NOTE 2.		PART NO.	DRN <i>S. Francis</i>	DATE 1-14-04	<b>ST-1200 LINE S.E STUD ASSY.</b> <b>1258-F6xx-Z3CT.</b>
FINISH PER NOTE 3.		CHK <i>F Basch</i>	DATE <i>expd</i>	DATE <i>8/3/07</i>	
<small>THE FASTENER PARTS SHOWN IN THIS PRINT ARE PROPRIETARY ARTICLES TO WHICH DFCI SOLUTIONS INC. RETAINS THE EXCLUSIVE RIGHTS OF MANUFACTURE, USE AND SALE. THE PRINT OR DRAWING IS SUBMITTED IN CONFIDENCE AND DOES NOT CONVEY A LICENSE OR PERMISSION TO MANUFACTURE THE FASTENER OR FASTENER PARTS.          © COPYRIGHT 2005, DFCI SOLUTIONS INC. ALL RIGHTS RESERVED.</small>		ENG <i>R. OLSEN</i>	DATE <i>8/13/07</i>	MFG <i>R. OLSEN</i>	DATE <i>8/13/07</i>
NEXT ASSY	USED ON	SALES <i>R. Hill</i>	DATE <i>8/13/07</i>	SIZE A	FSCM NO 72794
APPLICATION BLOCK		SCALE NTS	WT.	DWG. NO. C1258-F6	REV. B
DATE: 07/01/06 FORM: DRAWING				SHEET 2 OF 2	