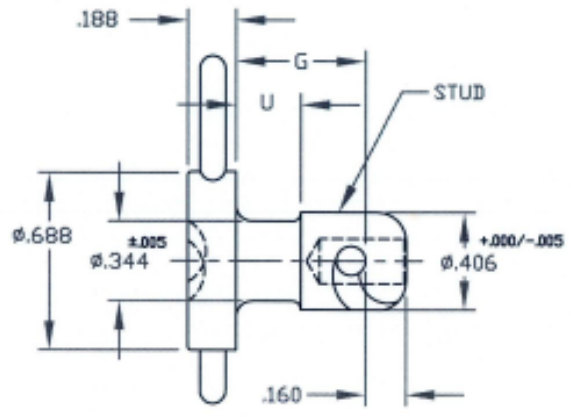
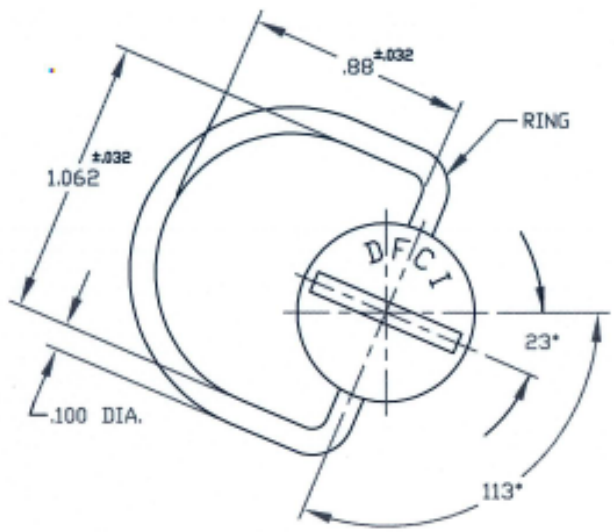



UNCONTROLLED

C122J-R65 SHT. 1 of 2 REV. A

REVISIONS			
SYM	DESCRIPTION	DATE	APPROV
A	INITIAL RELEASE PER ECN 845	7-11-06	<i>R. COLBSON</i>



MAT'L PER NOTE 1, SHT. 2	TOLERANCES ON DIMENSIONS UNLESS OTHERWISE SPECIFIED X° = ±2° .XX = ±.015 X/X = ±1/32 .XXX = ±.010 MACHINE FINISH 125T		 DFCI SOLUTIONS INC. 425 UNION BOULEVARD WEST ISLIP, NEW YORK 11795	
HEAT TREAT PER NOTE 2, SHT. 2	PART NO.	DRN <i>S. F. Francis</i> DATE 7-11-06	TITLE ST-1200 SIZE 65 STUD ASSY.	
FINISH		CHK <i>R. Colbson</i> DATE 7/12/06	122J-R65xx-Z3C	
ZINC PLATE PER ASTM-B-633, TYPE III, SC 2 CLEAR CHROMATE.		ENG <i>R. Colbson</i> DATE 7/12/06	SIZE A	FSCM NO 72794
<small>THE FASTENER PARTS SHOWN IN THIS PRINT ARE PROPRIETARY ARTICLES TO WHICH DFCI SOLUTIONS INC. RETAINS THE EXCLUSIVE RIGHTS OF MANUFACTURE, USE AND SALE. THE PRINT OR DRAWING IS SUBMITTED IN CONFIDENCE AND DOES NOT CONVEY A LICENSE OR PERMISSION TO MANUFACTURE THE PARTS OR FASTENER PARTS.</small>	NEXT ASSY USED ON	MFG <i>JS</i> DATE 7-12-06	DWG. NO. C122J-R65	REV. A
<small>DATE: 07/01/06 FORM: DRAWING</small>	APPLICATION BLOCK	SALES <i>B. Hildebrand</i> DATE 7-12-06	SCALE NTS	WT.
			SHEET 1 OF 2	

The parts shown in this print are proprietary articles to which DFCI Solutions, Inc. retains the exclusive rights of manufacture, use and sale. The print or drawing is submitted in confidence and does not convey a license or permission to manufacture the parts. Copyright © 2006 by DFCI Solutions, Inc. All rights reserved.


UNCONTROLLED

REVISIONS			
SYM	DESCRIPTION	DATE	APPROV
A	INITIAL RELEASE PER ECN 845	7-11-06	<i>R. OLSON</i>

PART NO. (STEEL)	G	U
122J-R6535-Z3C	.350	.125
122J-R6540-Z3C	.400	.188
122J-R6545-Z3C	.450	
122J-R6550-Z3C	.500	.250
122J-R6555-Z3C	.550	
122J-R6560-Z3C	.600	.300
122J-R6570-Z3C	.700	.350
122J-R6580-Z3C	.800	.450
122J-R6590-Z3C	.900	.550
122J-R65100-Z3C	1.000	.650
122J-R65110-Z3C	1.100	
122J-R65120-Z3C	1.200	
122J-R65130-Z3C	1.300	
122J-R65140-Z3C	1.400	
122J-R65150-Z3C	1.500	

NOTES:

- MATERIAL:
 - A) STUD: PER A.I.S.I 8620 STEEL OR TYPE 303 ST. STEEL.
 - B) RING: HIGH CARBON STEEL OR TYPE 420 ST. STEEL.
- HEAT TREAT:
 - A) STEEL STUD HARDNESS = ROCKWELL C27 - 33.
 - ST. STEEL TYPE 303 STUD NOT HEAT TREATED.
 - B) STEEL OR TYPE 420 ST. ST. RING HARDNESS = ROCKWELL C40 - 45.
- FOR PART NO. OF STUD ASSY. MADE FROM TYPE 303 ST. STEEL, REMOVE SUFFIX -Z3C FROM P/N AND ADD 'SS' EXAMPLE 122J-R6535-SS.
- FOR ALTERNATE FINISHES P/N, REMOVE SUFFIX -Z3C FROM PART P/N AND ADD THE REQUIRED FINISH SUFFIX. EXAMPLE: 122J-R6535-Z3B.
- PLEASE VISIT www.dfci.com/dzfinish.html FOR A LIST OF AVAILABLE FINISHES.

MAT'L PER NOTE 1.	TOLERANCES ON DIMENSIONS UNLESS OTHERWISE SPECIFIED X = ±2" .XX = ±.015 X/X = ±1/32 .XXX = ±.010		MACHINE FINISH 125T		 DFCI SOLUTIONS INC. 425 UNION BOULEVARD WEST ISLIP, NEW YORK 11795
HEAT TREAT PER NOTE 2.	PART NO.	DRN <i>S. FRAZIER</i>	DATE 7-11-06	TITLE ST-1200 SIZE 65 STUD ASSY. 122J-R65xx-Z3C	
FINISH PER TITLE BLOCK ON SHT. 1		CHK <i>R. OLSON</i>	DATE 7/12/06		
		ENG <i>R. OLSON</i>	DATE 7/12/06		
		MFG <i>JS</i>	DATE 7/12/06	SIZE A	FSCM NO 72794
		QC <i>B. Hildebrand</i>	DATE 7-12-06	DWG. NO. C122J-R65	REV. A
	NEXT ASSY	USED ON	SALES	SCALE NTS	WT.
APPLICATION BLOCK				SHEET 2 OF 2	

DATE: 07/01/06 FORM: DRAWING